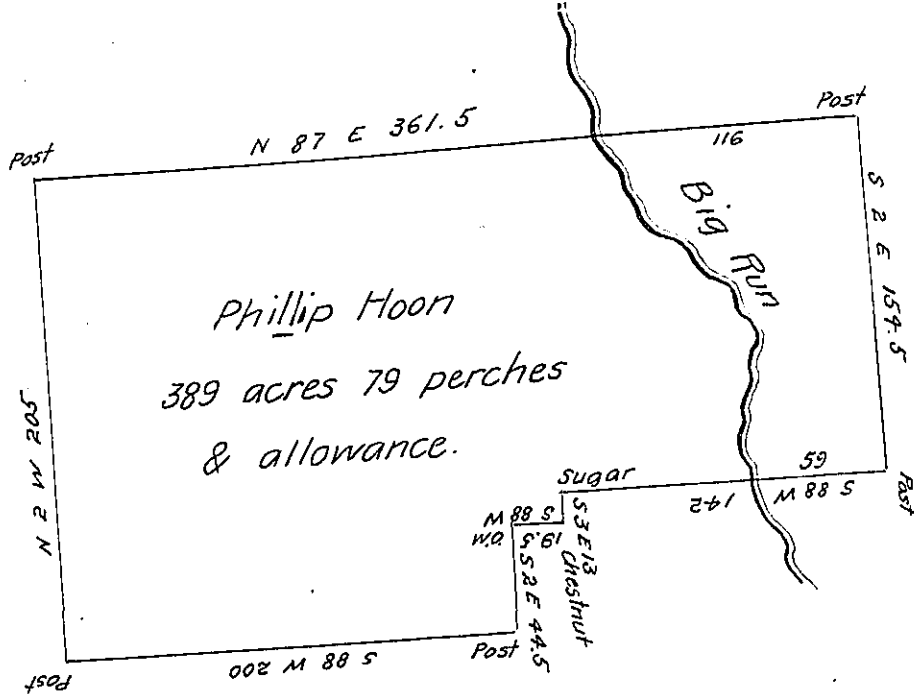


C 180-229 C 134 289

Ritchey Wm Montgomery



Phillip Hoon
389 acres 79 perches
& allowance.

George Purry P-29-184

C-4-117

James Alexander

John McQuillan

The above is a draft of survey, of a tract of land Situate in Wolfcreek Township Mercer County, and bounded as above described. Surveyed the eleventh day of December 1828 in pursuance of an actual settlement and residence made thereon by Phillip Hoon at an early date. Containing three hundred eighty nine acres and Seventy nine perches and allowance of Six per cent for roads. Mr. Hoon with his family were residing on the land engaged in making a pretty large improvement at the time of Surveying

A. Brown D.S.

Mercer County

Jacob Spangler Esq.

S. G.

IN TESTIMONY that the above is a copy of the original remaining on file in the Department of Internal Affairs of Pennsylvania, made conformably to an Act of Assembly approved the 16th day of February, 1833, I have hereunto set my Hand and caused the Seal of said Department to be affixed at Harrisburg, this nineteenth day of April 1905

George Purry
Secretary of Internal Affairs.